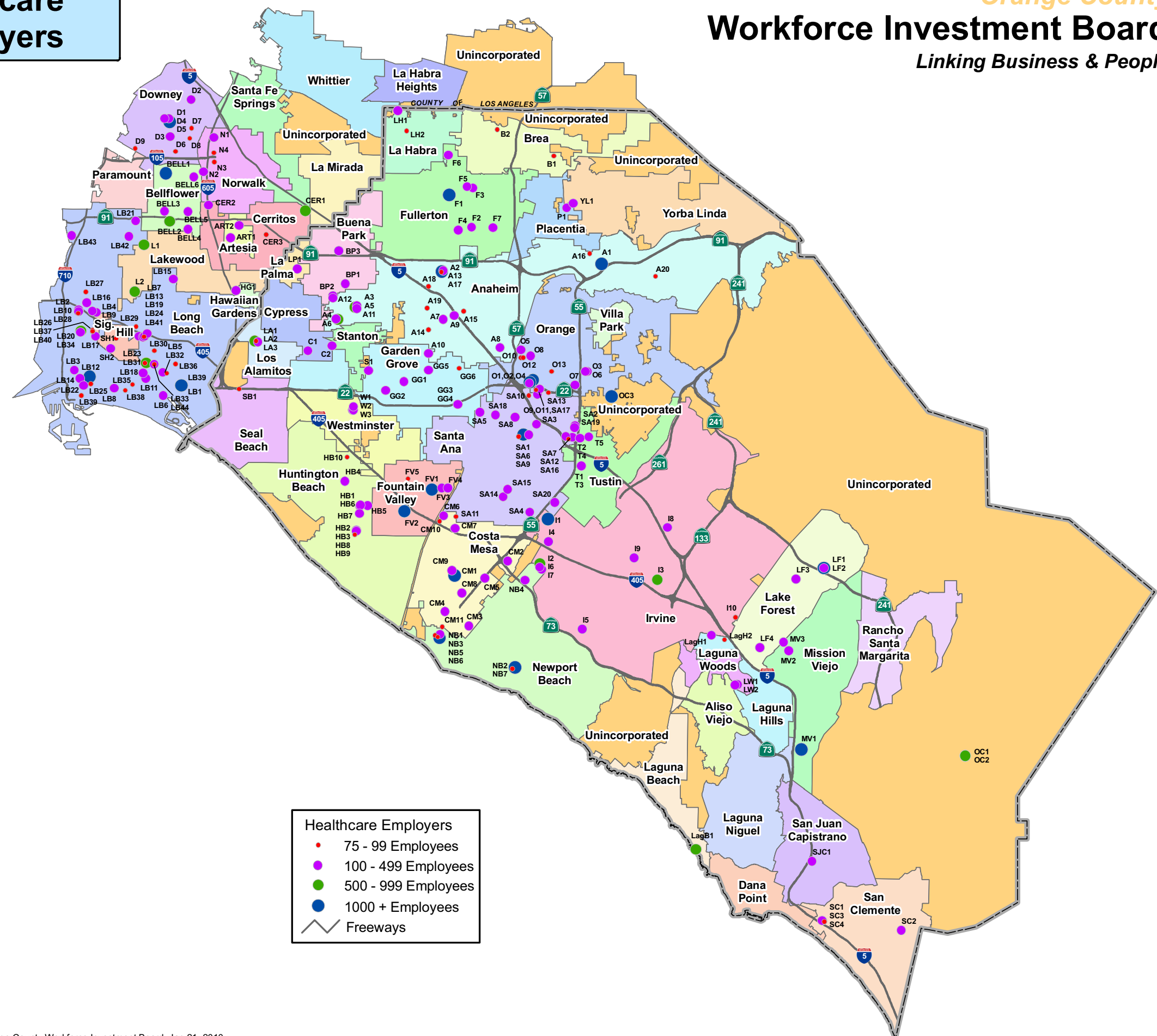
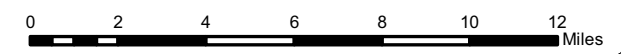


# Healthcare Employers



Source: Orange County Workforce Investment Board, Jan 21, 2010  
 Data: Geomatics Land Information Systems Division  
 Projection: NAD83 State Plane CA Zone VI-Feet



**ANAHEIM**

A1 Kaiser Foundation Hospitals 441 N Lakeview Ave Anaheim 92807-3028 Emp(1700)  
 A2 Anaheim Memorial Medical Ctr 1111 W La Palma Ave Anaheim 92801-2804 Emp(2200)  
 A3 Prime Healthcare Anaheim LLC 3033 W Orange Ave Anaheim 92804-3156 Emp(650)  
 A4 Pacific Health Corporation 3350 W Ball Rd Anaheim 92804-3710 Emp(500)  
 A5 Sun Mar Management Services 501 S Beach Blvd Anaheim 92804-1810 Emp(200)  
 A6 Windsor Gardens 3415 W Ball Rd Anaheim 92804-3708 Emp(164)  
 A7 Front Porch Communities/Services 1401 W Ball Rd Anaheim 92802-1711 Emp(159)  
 A8 Alliance Imaging Inc 1900 S State College Blvd Anaheim 92806-0101 Emp(150)  
 A9 Crescent Healthcare Inc 888 S Disneyland Dr Anaheim 92802-1847 Emp(150)  
 A10 North American Health Care Inc 2040 S Euclid St Anaheim 92802-3111 Emp(150)  
 A11 West Anaheim Extended Care 645 S Beach Blvd Anaheim 92804-3102 Emp(125)  
 A12 Anaheim Terrace Care Ctr LLC 141 S Knott Ave Anaheim 92804-1406 Emp(100)  
 A13 Leisure Court Nursing Center 1135 N Leisure Ct Anaheim 92801-2939 Emp(100)  
 A14 Buena Vista Care Center Inc 1440 S Euclid St Anaheim 92802-2156 Emp(90)  
 A15 Harbor Villa Care Center 861 S Harbor Blvd Anaheim 92805-5157 Emp(90)  
 A16 Diversified Clinical Services 4225 E La Palma Ave Anaheim 92807-1815 Emp(85)  
 A17 1130 W La Palma Ave Inc 1130 W La Palma Ave Anaheim 92801-2803 Emp(75)  
 A18 Childrens Home Society Cal 505 N Euclid St Ste 100 Anaheim 92801-5515 Emp(75)  
 A19 Sun Mar Nursing Center Inc 1720 W Orange Ave Anaheim 92804-2638 Emp(75)  
 A20 Melissa Sweitzer PHD Inc 446 S Anaheim Hills Rd Anaheim 92807 Emp(78)

**ARTESIA**

ART1 Artesia Christian Home Inc 11614 183rd St Artesia 90701-5506 Emp(140)  
 ART2 Windsor Twin 11900 Artesia Blvd Artesia 90701-4039 Emp(133)

**BREA**

B1 Emergency Ambulance Service 3200 E Birch St Ste A Brea 92821-6287 Emp(80)  
 B2 Kindred Healthcare Operating 875 N Brea Blvd Brea 92821-2606 Emp(79)

**BELLFLOWER**

BELL1 Kaiser Foundation Hospitals 9400 Rosecrans Ave Bellflower 90706-2246 Emp(2000)  
 BELL2 Jupiter Bellflower Doctors Hosp 9542 Artesia Blvd Bellflower 90706-6511 Emp(500)  
 BELL3 Harbor Health Care Inc 16917 Clark Ave Bellflower 90706-5703 Emp(200)  
 BELL4 Estrella Inc 17836 Woodruff Ave Bellflower 90706-7029 Emp(110)  
 BELL5 Life Care Centers America Inc 16910 Woodruff Ave Bellflower 90706-6036 Emp(100)  
 BELL6 Peter Wyjan DDS 10318 Rosecrans Ave Bellflower 90706-2702 Emp(100)

**BUENA PARK**

BP1 U S Care Health & Management 8520 Western Ave Buena Park 90620-3927 Emp(135)  
 BP2 Knott Avenue Care Center 9021 Knott Ave Buena Park 90620-4138 Emp(125)  
 BP3 American Wht Mssn In Strm 7212 Orangethorpe Ave Buena Park 90621-3341 Emp(100)

**CERRITOS**

CER1 Global Med Services Inc 16429 Berwyn Rd Cerritos 90703-2440 Emp(600)  
 CER2 College Hospital Inc 10802 College Pl Cerritos 90703-1505 Emp(300)  
 CER3 Angel City Fmly Care Svcs Inc 12750 Center Court Dr S Cerritos 90703-8581 Emp(90)

**COSTA MESA**

CM1 Developmental Svcs Cal Dept 2501 Harbor Blvd Costa Mesa 92626-6143 Emp(1500)  
 CM2 Inside Outdoors Foundation 200 Kalmus Dr Costa Mesa 92626-5922 Emp(200)  
 CM3 Newport Mesa Unified Schl Dst 2985 Barrish St Bldg E Costa Mesa 92626 Emp(200)  
 CM4 Mesa Vrde Cnvalascent Hosp Inc 661 Center St Costa Mesa 92627-2708 Emp(135)  
 CM5 A P Investments Inc 2570 Newport Blvd Costa Mesa 92627-1331 Emp(120)  
 CM6 Talbert Medical Group Inc 1665 Scenic Ave Ste 100 Costa Mesa 92626-1443 Emp(115)  
 CM7 Action Hlth Care Prrsonnel Svcs 3303 Harbor Blvd Ste G13 Costa Mesa 92626-1542 Emp(100)  
 CM8 Beverly Enterprises-California 340 Victoria St Costa Mesa 92627-1914 Emp(100)  
 CM9 Independent Options 2532 Santa Catalina Dr Costa Mesa 92626-6880 Emp(100)  
 CM10 Project Independence 3505 Cadillac Ave Ste 103 Costa Mesa 92626-1434 Emp(99)  
 CM11 Leisure Care 1455 Superior Ave Costa Mesa 92627 Emp(90)

**CYPRESS**

C1 Focus Diagnostics Inc 11331 Valley View St Cypress 90630-5366 Emp(400)  
 C2 Consoldted Med Bo-Analysis Inc 11215 Knott Ave Cypress 90630-5493 Emp(100)

**DOWNEY**

D1 Downey Rgnal Med Cntr-Hospital 11500 Brookshire Ave Downey 90241-4917 Emp(1150)  
 D2 Caremore Medical Group Inc 10000 Lakewood Blvd Downey 90240-4020 Emp(350)  
 D3 Mental Hlth Cnvsicent Svcs Inc 12023 Lakewood Blvd Downey 90242-2635 Emp(335)  
 D4 Downey Community Health Center 8425 Iowa St Downey 90241-4929 Emp(175)  
 D5 Young Mens Chrstin Assn of La 11531 Downey Ave Downey 90241-4936 Emp(150)  
 D6 Southern Cal Prrmntte Med Group 9449 Imperial Hwy Downey 90242-2814 Emp(99)  
 D7 Downey Retirement Home 11500 Doland Ave Downey 90239 Emp(90)  
 D8 Association For Retarded Citzn 12049 Woodruff Ave Downey 90241-5603 Emp(75)  
 D9 Covenant Care California Inc 13007 Paramout Blvd Downey 90242-4329 Emp(75)

**FOUNTAIN VALLEY**

FV1 Villey Fountain Regional Hosp1 17100 Euclid St Fountain Valley 92708-4004 Emp(1600)  
 FV2 Orange Coast Memorial Med Ctr 9920 Talbert Ave Fountain Valley 92708-5153 Emp(1000)  
 FV3 St Joseph Heritage Healthcare 11420 Warner Ave Fountain Valley 92708-2529 Emp(200)  
 FV4 Hcr Manorcare Med Svcs Fia Inc 11680 Warner Ave Fountain Valley 92708-2513 Emp(195)  
 FV5 Boys Girls CLB Huntington Vly 16582 Brookhurst St Fountain Valley 92708-2353 Emp(89)

**FULLERTON**

F1 St Jude Hospital 101 E Valencia Mesa Dr Fullerton 92835-3809 Emp(2582)  
 F2 Florence Crittenton Services 801 E Chapman Ave Ste 230 Fullerton 92831-3847 Emp(320)  
 F3 Corecare V A Cal Ltd Partnr 2525 Brea Blvd Fullerton 92835-2787 Emp(200)  
 F4 Windsor Gardens 245 E Wilshire Ave Fullerton 92832-1935 Emp(133)  
 F5 Corecare I I I 800 Morningside Dr Fullerton 92835-3597 Emp(130)  
 F6 St Jude Hospital 279 Imperial Hwy Ste 770 Fullerton 92835-1059 Emp(120)  
 F7 Interface Rehab Inc 2000 E Chapman Ave 200 Fullerton 92831-4106 Emp(105)

**GARDEN GROVE**

GG1 Pathfinder Health Inc 12570 Brookhurst St Ste 1 Garden Grove 92840-4882 Emp(150)  
 GG2 Garden Grove Convalescent Hosp 12882 Shackelford Ln Garden Grove 92841-5109 Emp(125)  
 GG3 Companions Home Healthcare 12072 Trask Ave Garden Grove 92843-3821 Emp(110)  
 GG4 12072 Trask Inc 12072 Trask Ave Garden Grove 92843-3821 Emp(100)  
 GG5 Kaiser Foundation Hospitals 12100 Euclid St Garden Grove 92840-3304 Emp(100)  
 GG6 Chapman Hbr Skiled Nrsng Care 12232 Chapman Ave Garden Grove 92840-3717 Emp(95)

**HAWAIIAN GARDENS**

HG1 Gardens Rgnal Hosp Med Ctr Inc 21530 Pioneer Blvd Hawaiian Gardens 90716-2608 Emp(300)

**HUNTINGTON BEACH**

HB1 Prime Healthcare 17772 Beach Blvd Huntington Beach 92647-6819 Emp(480)  
 HB2 HB Healthcare Associates LLC 18811 Florida St Huntington Beach 92648-1920 Emp(300)  
 HB3 Huntington Senior Residence 18851 Florida St Huntington Beach 92648-1920 Emp(300)  
 HB4 No Ordinary Moments Inc 16742 Gothard St Ste 115 Huntington Beach 92647-4564 Emp(250)  
 HB5 Douglas Fir Holdings LLC 8382 Newman Ave Huntington Beach 92647-7038 Emp(145)  
 HB6 Huntington Beach Commnty Clinc 8041 Newman Ave Huntington Beach 92647-7034 Emp(120)  
 HB7 Kaiser Foundation Hospitals 18081 Beach Blvd Huntington Beach 92648-1304 Emp(100)  
 HB8 Ethel Barthalamew 7781 Garfield Ave Huntington Beach 92648-2026 Emp(86)  
 HB9 Sea Breeze Health Care Inc 7781 Garfield Ave Huntington Beach 92648-2026 Emp(86)  
 HB10 Intergro Rehab Service 7400 Center Ave Ste 106 Huntington Beach 92647-3039 Emp(80)

**IRVINE**

I1 Edwards Lifesciences LLC 1 Edwards Way Irvine 92614-5688 Emp(1700)  
 I2 Senior Care Management LLC 18881 Von Karman Ave Irvine 92612-1500 Emp(600)  
 I3 Amisub (irvine Regional Hospi) 16200 Sand Canyon Ave Irvine 92618-3714 Emp(590)  
 I4 Sports Club Company Inc 1980 Main St FL 4 Irvine 92614-7200 Emp(300)  
 I5 Merage Jewish Community Center 1 Federation Way Ste 200 Irvine 92603-0174 Emp(250)  
 I6 U S Labs Inc 2601 Campus Dr Irvine 92612-1601 Emp(250)  
 I7 Owl Education and Training 2465 Campus Dr Irvine 92612-1502 Emp(175)  
 I8 United Cerebral Palsy Associati 980 Roosevelt Ste 100 Irvine 92620-3670 Emp(130)  
 I9 The Permanente Med Group Inc 6 Willard Irvine 92604-4694 Emp(100)  
 I10 Total Renal Care Inc 15253 Bake Pkwy Irvine 92618-2502 Emp(99)

**LA HABRA**

LH1 Mary & Friends 1101 Farrington Dr La Habra 90631-2510 Emp(120)  
 LH2 Life Care Centers America Inc 1233 W La Habra Blvd La Habra 90631-5226 Emp(90)

**LA PALMA**

LP1 La Palma Hospital Medical Ctr 7901 Walker St La Palma 90623-1722 Emp(360)

**LAGUNA BEACH**

LagB1 South Coast Medical Center 31872 Coast Hwy Laguna Beach 92651-6773 Emp(690)

**LAGUNA HILLS**

LagH1 Care Plus Nursing Services Inc 22921 Triton Way Ste 124 Laguna Hills 92653-1236 Emp(140)  
 LagH2 Dva Renal Healthcare Inc 23141 Plaza Pointe Dr Laguna Hills 92653-1425 Emp(75)

**LAGUNA WOODS**

LW1 Hcr Manorcare Med Svcs Fia Inc 24962 Calle Aragon Laguna Woods 92653 Emp(150)  
 LW2 Gate Three Healthcare LLC 24962 Calle Aragon Laguna Woods 92637-3883 Emp(120)

**LAKE FOREST**

LF1 Hallmark Rehab LLC 27442 Portlla Pkwy Ste 200 Lake Forest 92610 Emp(1200)  
 LF2 Skilled Healthcare LLC 27442 Portola Pkwy Lake Forest 92610-2823 Emp(100)  
 LF3 Apria Healthcare Group Inc 26220 Enterprise Ct Lake Forest 92630-8405 Emp(425)  
 LF4 Casa Pacifica 23442 El Toro Rd Ofc Lake Forest 92630-6978 Emp(200)

**LAKEWOOD**

L1 Tenet Healthsystem Medical 3700 South St Lakewood 90712-1419 Emp(700)  
 L2 County of Los Angeles 4060 Watson Plaza Dr Lakewood 90712-4033 Emp(500)

**LONG BEACH**

LB1 Veterans Health Administration 5901 E 7th St Long Beach 90822-5201 Emp(2700)  
 LB2 Palm Harbor Residency LP 3501 Cedar Ave Long Beach 90807-3809 Emp(200)  
 LB3 Sunbridge Harbor View 490 W 14th St Long Beach 90813-2943 Emp(200)  
 LB4 Sunbridge Healthcare Corp 850 E Wardlow Rd Long Beach 90807-4628 Emp(200)  
 LB5 Childnet Youth & Fmly Svcs Inc 5150 E Pacific Coast Hwy Long Beach 90804-3312 Emp(177)  
 LB6 Conservation Corps Long Beach 340 Nieto Ave Long Beach 90814-1845 Emp(165)  
 LB7 Jewish Community Ctr Long Bch 3801 E Willow St Long Beach 90815-1734 Emp(150)  
 LB8 Longwood Management Corp 1913 E 5th St Long Beach 90802-2024 Emp(150)  
 LB9 Career Transition Center 3447 Atlantic Ave Ste 100 Long Beach 90807-4513 Emp(135)  
 LB10 Hillcrest Convalescent Hosp 3401 Cedar Ave Long Beach 90807-4422 Emp(130)  
 LB11 Empress Rehabilitation Center 1020 Termino Ave Long Beach 90804-4123 Emp(120)  
 LB12 Catholic Healthcare West 1050 Linden Ave Long Beach 90813-3321 Emp(1450)  
 LB13 Intercommunity Care Centers 2626 Grand Ave Long Beach 90815-1707 Emp(120)  
 LB14 Atlantic Recovery Services 944 Pacific Ave Long Beach 90813-4228 Emp(100)  
 LB15 Brittany House LLC 5401 E Centralia St Long Beach 90808-1452 Emp(100)  
 LB16 Guidance Center 3711 Long Beach Blvd Long Beach 90807-3315 Emp(100)  
 LB17 ICI Enterprises Inc 790 E Willow St Ste 150 Long Beach 90806-2719 Emp(100)  
 LB18 Mariora Investments LLC 3801 E Anaheim St Long Beach 90804-4004 Emp(100)  
 LB19 Porchlight Inc 3800 Kilroy Airport Way Long Beach 90806-2494 Emp(100)  
 LB20 Royal Care Skilled Nursing Ctr 2725 Pacific Ave Long Beach 90806-2612 Emp(100)  
 LB21 Windsor Gardens 3232 E Artesia Blvd Long Beach 90805-2811 Emp(100)  
 LB22 Young Mens Chrstrn Assc Gr L B 225 E 6th St Long Beach 90802-1302 Emp(100)  
 LB23 Community Hospital Long Beach 1720 Termino Ave Long Beach 90804-2104 Emp(625)  
 LB24 Long Beach Care Center 2615 Grand Ave Long Beach 90815-1708 Emp(99)  
 LB25 Young Mens Christian Associat 525 E 7th St Long Beach 90813-4503 Emp(99)  
 LB26 Childrens Cardiac Clinic of T 2801 Atlantic Ave Long Beach 90806-1701 Emp(90)  
 LB27 Covenant Care California Inc 4010 N Virginia Rd Long Beach 90807-2627 Emp(90)  
 LB28 Palcrest Medallion Convalesc 3355 Pacific Pl Long Beach 90806-1239 Emp(85)  
 LB29 Bowers Companies Inc 3355 E Spring St Ste 301 Long Beach 90806-6826 Emp(83)  
 LB30 For Association 4519 E Stearns St Long Beach 90815-2540 Emp(81)  
 LB31 Delight Investments Inc 3850 E Esther St Long Beach 90804-2009 Emp(80)  
 LB32 Kindercare Learning Ctrs Inc 5251 E Las Lomas St Long Beach 90815-4206 Emp(80)  
 LB33 Memorial Counseling Assoc Inc 4510 E Pacific Coast Long Beach 90804-3279 Emp(80)  
 LB34 Healthsmart Pacific Inc 2776 Pacific Ave Long Beach 90806-2613 Emp(610)  
 LB35 Substance Abse Fdn LNG Bch 3125 E 7th St Long Beach 90804-4932 Emp(80)  
 LB36 Home Instead Senior Care 5500 E Atherton St Long Beach 90815-4016 Emp(78)  
 LB37 Atlantic Mem Hlth Care Assoc 2750 Atlantic Ave Long Beach 90806-2713 Emp(75)  
 LB38 Edgewater Convalescent Hosp 2625 E 4th St Long Beach 90814-1205 Emp(75)  
 LB39 Long Bch Cy Work Force Dev Bur 110 Pine Ave Ste 1100 Long Beach 90802-4429 Emp(75)  
 LB40 William H Warden III MD 2760 Atlantic Ave Long Beach 90806-2755 Emp(75)  
 LB41 Healthcare Partners LLC 2600 Redondo Ave Long Beach 90806-2325 Emp(405)  
 LB42 Telecare Corporation 6060 N Paramount Blvd Long Beach 90805-3711 Emp(230)  
 LB43 Charles Drew Univ Mdcine Scnce 135 W Victoria St Long Beach 90805-2162 Emp(210)  
 LB44 Marcantassie Inc 4510 E Pacific Coast Hwy Long Beach 90804-3279 Emp(200)

**LOS ALAMITOS**

LA1 Tenet Healthsystem Medical 3751 Katella Ave Los Alamitos 90720-3101 Emp(625)  
 LA2 Katella Properties 3902 Katella Ave Los Alamitos 90720-3304 Emp(170)  
 LA3 Cypress Ctr For Fmly Medicine 3801 Katella Ave Ste 301 Los Alamitos 90720-3373 Emp(90)

**MISSION VIEJO**

MV1 Mission Hosp Regional Med Ctr 27700 Medical Center Rd Mission Viejo 92691-6426 Emp(1349)  
 MV2 Vocational Visions 26041 Pala Mission Viejo 92691-2705 Emp(110)  
 MV3 Orange County Royale Convalesc 23228 Madero Mission Viejo 92691-2706 Emp(100)

**NEWPORT BEACH**

NB1 Hoag Hospital Foundation 1 Hoag Dr Newport Beach 92663-4162 Emp(3600)  
 NB2 Vintage Senior Management Inc 23 Corporate Plaza Dr Newport Beach 92660-7911 Emp(1605)  
 NB3 Five Star Quality Care Inc 466 Flagship Rd Newport Beach 92663-3635 Emp(200)  
 NB4 US Healthcare Partners Inc 1500 Quail St Ste 200 Newport Beach 92660-2751 Emp(125)  
 NB5 Park Superior Healthcare LLC 1445 Superior Ave Newport Beach 92663-6152 Emp(98)  
 NB6 Michael L Gordon MD 307 Placencia Ave Newport Beach 92663-3310 Emp(85)  
 NB7 Newport Beach Orthopedic Inst 22 Corporate Plaza Dr Newport Beach 92660-7985 Emp(79)

**NORWALK**

N1 Front Porch Communities/Services 11701 Studebaker Rd Norwalk 90650-7544 Emp(200)  
 N2 Norwalk Madows Nursing Ctr LLC 10625 Leffingwell Rd Norwalk 90650-3434 Emp(120)  
 N3 Elena Villa Healthcare Center 13226 Studebaker Rd Norwalk 90650-2532 Emp(90)  
 N4 Intercommunity Nursing Center 12627 Studebaker Rd Norwalk 90650-2518 Emp(75)

**ORANGE**

O1 St Joseph Hospital of Orange 1100 W Stewart Dr Orange 92868-3849 Emp(2100)  
 O2 Childrens Healthcare Cal 455 S Main St Orange 92868-3835 Emp(1600)  
 O3 Chapman Medical Center Inc 2601 E Chapman Ave Orange 92869-3206 Emp(425)  
 O4 St Joseph Health System 500 S Main St Ste 400 Orange 92868-4507 Emp(200)  
 O5 County of Orange 800 N Eckhoff St Bldg 121 Orange 92868-1008 Emp(150)  
 O6 St Joseph Heritage Med Group 2501 E Chapman Ave Orange 92869-3204 Emp(134)  
 O7 Rehabilitation Inst Southern Cal 1800 E La Veta Ave Orange 92866-2902 Emp(130)  
 O8 Visiting Nurse Assn Inland CNT 1337 W Braden Ct Orange 92868-1123 Emp(128)  
 O9 Arbormed Inc 725 W Town and Country Ste 200 Orange 92868 Emp(123)  
 O10 Companion Home Hlth & Hospice 2041 W Orangewood Ave Orange 92868-1944 Emp(95)  
 O11 Genzyme Corporation 1054 W Town and Country Rd Orange 92868-4716 Emp(80)  
 O12 St Joseph Hospice 1845 W Orangewood Ave Orange 92868-2053 Emp(80)  
 O13 City of Orange 230 E Chapman Ave Orange 92866-1506 Emp(75)

**ORANGE COUNTY**

OC1 Quest Diagnostics Incorporated 33608 Ortega Hwy Orange Co 92675-2042 Emp(500)  
 OC2 Nichols Inst Reference Labs 33608 Ortega Hwy Orange Co 92675-2042 Emp(525)  
 OC3 Tenet Healthsystem Medical 13032 Earham St Orange Co 92705-2113 Emp(1500)

**PLACENTIA**

P1 Tenet Healthsystem Medical 1301 N Rose Dr Placentia 92870-3802 Emp(400)

**SAN CLEMENTE**

SC1 San Clemente Medical Ctr LLC 654 Camino De Los Mares San Clemente 92673-2827 Emp(300)  
 SC2 American Corrective Counseling 180 Avenida La Pata San Clemente 92673-6300 Emp(297)  
 SC3 HCA Inc 654 Camino De Los Mares San Clemente 92673-2827 Emp(250)  
 SC4 San Clemente Villas By Sea 660 Camino De Los Mares San Clemente 92673-1800 Emp(80)

**SAN JUAN CAPISTRANO**

SJC1 Atria Senior Living Group Inc 32353 San Juan Creek Rd San Juan Capistrano 92675-4254 Emp(109)

**SANTA ANA**

SA1 County of Orange 405 W 5th St Santa Ana 92701-4599 Emp(2500)  
 SA2 Calvary Church Santa Ana Inc 1010 N Tustin Ave Santa Ana 92705-3503 Emp(160)  
 SA3 French Park Care Center 600 E Washington Ave Santa Ana 92701-3843 Emp(150)  
 SA4 Community Dental Services 2 MacArthur Pl Santa Ana 92707-5924 Emp(140)  
 SA5 Covenant Care California Inc 1929 N Fairview St Santa Ana 92706-2205 Emp(125)  
 SA6 Clinica Medica Familiar 517 N Main St Ste 100 Santa Ana 92701-4684 Emp(100)  
 SA7 Volunteer Ctr of Greater Omge 1901 E 4th St Ste 100 Santa Ana 92705-3918 Emp(100)  
 SA8 Womens Law Center 950 W 17th St Ste D Santa Ana 92706-3573 Emp(100)  
 SA9 Orange County Health Care Agcy 12 Civic Center Plz Santa Ana 92701-4057 Emp(99)  
 SA10 Professional Healthcare Svcs 2700 N Main St Ste 908 Santa Ana 92705-6679 Emp(99)  
 SA11 Hospice Touch Inc 3401 W Sunflower Ave Santa Ana 92704-6948 Emp(84)  
 SA12 Family Solutions Inc 203 N Golden Circle Dr Santa Ana 92705-4010 Emp(75)  
 SA13 Girls and Boys Town 2740 N Grand Ave FL 2 Santa Ana 92705-8750 Emp(75)  
 SA14 Health Resources Corp 2701 S Brnstol St Santa Ana 92704-6201 Emp(400)  
 SA15 Orange County Royale Convalesc 1030 W Warner Ave Santa Ana 92707-3147 Emp(330)  
 SA16 Olive Crest Treatment Centers 2130 E 4th St Ste 200 Santa Ana 92705-3818 Emp(300)  
 SA17 Town & Country Manor of The Ch 555 E Memory Ln Ste Ofc Santa Ana 92706-1705 Emp(210)  
 SA18 Southern Cal Spcialty Care Inc 1901 College Ave Santa Ana 92706-2334 Emp(200)  
 SA19 Western Medical Center Aux 1301 N Tustin Ave Santa Ana 92705-8619 Emp(200)  
 SA20 Westcliff Medical Labs Inc 1821 E Dyer Rd Santa Ana 92705-5700 Emp(180)

**SEAL BEACH**

SB1 Beverly Enterprises - Cal 3000 Beverly Manor Dr Seal Beach 90740-2535 Emp(80)

**SIGNAL HILL**

SH1 Independent Physician MGT LLC 2525 Cherry Ave Ste 250 Signal Hill 90755-2056 Emp(75)  
 SH2 Universal Care Inc 1600 E Hill St Signal Hill 90755-3612 Emp(350)

**STANTON**

S1 California Friends Homes 12151 Dale Ave Stanton 90680-3889 Emp(260)

**TUSTIN**

T1 Pacific Health Corporation 14662 Newport Ave Tustin 92780-6064 Emp(300)  
 T2 HealthSouth Corporation 14851 Yorba St Tustin 92780-2925 Emp(200)  
 T3 Tustin Hospital and Med Ctr 14662 Newport Ave Tustin 92780-6064 Emp(200)  
 T4 Western Med Rhlbtion Assoc LP 14851 Yorba St Tustin 92780-2925 Emp(140)  
 T5 All Care Services Inc 17671 Irvine Blvd Ste 110 Tustin 92780-3128 Emp(100)

**WESTMINSTER**

W1 Kindred Hospital-Westminster 200 Hospital Cir Westminster 92683-3910 Emp(400)  
 W2 Extended Care Hosp Westminster 206 Hospital Cir Westminster 92683-3910 Emp(115)  
 W3 Helping Hands Sanctuary of Ida 240 Hospital Cir Westminster 92683-3953 Emp(100)

**YORBA LINDA**

YL1 St Jude Heritage Medical Group 4900 Prospect Ave Yorba Linda 92886-2128 Emp(148)